



www.gefa.org

INVESTING IN GEORGIA'S
ENERGY, LAND & WATER RESOURCES



Innovative SRF Eligibilities

CIFA

Jason Bodwell
Senior Program Manager

May 19, 2015

- Solar Photovoltaic
- Wind Turbine
- Geothermal Heat Pump



- Methane gas collection
- Cogeneration projects
- \$7M city of Atlanta project





Project Eligibility Requirements

	Project Eligibility	
	On-site Project	Off-site Project
Energy production for <u>DIRECT USE</u> by the facility	Eligible	Eligible
Energy production <u>SOLD TO</u> the electrical grid or natural gas distribution system	Eligible	Ineligible

- Chatsworth Water Works
- 1 MW solar installation
- On-site location and direct use
- \$2.5M with \$300,000 in PF





2015 IUP lists – Huge demand for solar

CWSRF

- 12 solar projects
- \$15.4M in solar projects
- 5.3 MW of solar energy
- Projects located at sewer pump stations and sewer treatment plants

DWSRF

- 5 solar projects
- \$2.28M in solar projects
- 1.3 MW of solar energy
- Projects located at pump stations and water treatment plants

- Water and wastewater treatment facilities cannot be sized in excess of **peak demand** of the water or wastewater treatment facility.



Waste-to-Energy Projects - Landfills

- Waste is combusted at a high temperature creating steam that turns turbines and generates electricity
- Waste is combusted and converted to biogas for alternative fuels



- Loan provided through state-funded loan program
- \$27.5M loan
- Super high heat oxygen starved environment
- From 50 tons per day to 200 tons per day of waste burned through process

PYROLYSIS UNIT



WASTE FEEDSTOCK



POWER GENERATION



GAS SEPARATION



Project Benefits:

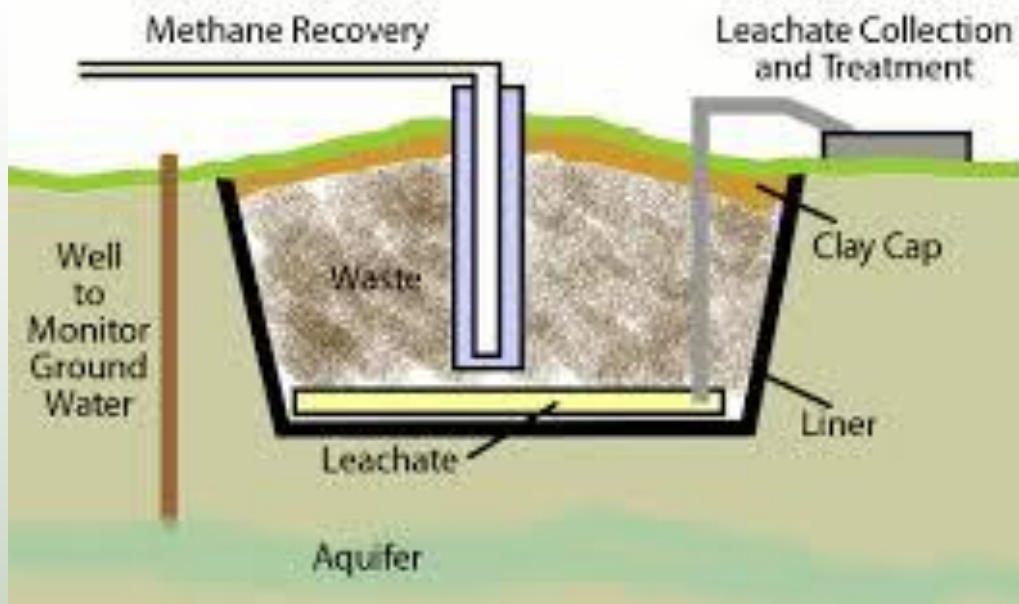
- Reduce waste volume to landfill
- Reclaim existing landfill area
- Reduce need for landfill expansion



Waste-to-Energy Projects - Landfill methane gas collection

- Methane gas collection projects
- Reduce potential of methane in ground water
- Create power to run operations of landfill

Methane from Landfill





www.gefa.org

INVESTING IN GEORGIA'S ENERGY, LAND & WATER RESOURCES



Jason Bodwell

Senior Program Manager

404-584-1129

jason@gefa.ga.gov

233 Peachtree St. NE
Harris Tower, Suite 900
Atlanta, Georgia 30303